

Contact Rating

- Nominal Load (Resistive Load $\cos \varphi = 1$)
Contact Capacity
 - 1c (N/C) 10A at 240VAC.
10A at 30VDC.
 - (N/O) 20A at 240VAC.
20A at 30VDC.
 - 1a (DM Only) 30A at 120VAC.
30A at 240VAC.
30A at 30VDC.
 - 1b (DB Only) 10A at 240VAC
10A at 30VDC
 - GU-DMJAC 30A at 250VAC.
30A at 12VDC.
 - Motor Load 1-1/2HP at 240VAC.
1/2HP at 240VAC.
- Rated Carrying Current 1c :20 A. 1a :30A
- Max. Allowable Current 1c :20 A. 1a :30A
- Max. Allowable Voltage AC 250V.
- Max. Allowable Power Force 1c :4,800VA, 1a:7,200VA
- Min. Switching Load DC 10V, 10mA.
- Contact Material Ag Alloy
- Contact Form SPDT & SPST.

Performance (at Initial Value)

- Contact Resistance 100mΩMax.@1A,6VDC
- Operate Time 15 mSec. Max.
- Release Time 10 mSec. Max.
- Dielectric Strength :
Between Coil & Contact 1,500VAC at 50/60 Hz
for one minute.

Main Feature

1. GU Single contact Form (SPST) series Relay offers switching capacity by 30 Amps in small size for various kinds of applications.
2. Simple magnetic circuit to meet mass production for low cost offer. Standard type is open type without duct cover. In addition, dust cover and sealed cover types are available to meet customer's various requirements.
3. -SS Flow Solder Type (Dust Cover) is available for PC Board processing.
4. PC Board mounting & quick connect terminals can be used for various application.
5. Flanged Cover can be fixed by screw or by snap-in mounting track.

Application

Domestic Appliances, Heating, Ventilating and Conditioning System, Car Control Switching Box, General Power Switching Applications.

Between Contacts 1,500VAC at 50/60 Hz
for one minute.

- Insulation Resistance 100 MegaΩ Min. at
500VDC.
- Max. On/Off Switching :
Electrical 30 Ops per Minute.
Mechanical 300 Ops per Minute.
- Temperature Range -30~155°C
- Humidity Range 45~85% RH.
- Coil Temperature Rise 60°C Max.
- Vibration :
Endurance 10 to 55 Hz dual
amplitude width 1.5 mm.
Error Operation 10 to 55 Hz dual
amplitude width 1.5 mm.
- Shock :
Endurance 1,000 m/S² Min.
Error Operation 50 m/S² Min.
- Life Expectancy :
Mechanical 10⁷ Operations at No
Load condition.
Electrical 10⁵ Operations at Rated
Resistive Load.
- Weight T90 : 27.2g
No Case : 21.6g

Safety Standard & Its File Number

- C -UL E141060.

- C -UL Class F Insulation System E181845.

Coil Specification (at 20°C)

Coil Sensitivity	Nominal Voltage (VDC)	Nominal Current (mA)	Coil Resistance ($\Omega \pm 10\%$)	Power Consumption (W)	Pull-In Voltage (VDC)	Drop-Out Voltage (VDC)	Maximum Allowable Voltage (VDC)
GU-D	5	185	27	Abt. 0.93	80% Maximum	5% Minimum	150% but for short time carrying current
	6	150	40				
	9	93	97				
	12	77	155				
	15	59	255				
	18	47	380				
	24	36	660				
	48	19.4	2,480				
	110	8.5	13,000				

Ordering Information

GU - SS - 1 12 D M

Contact Form:

Nil: One Form C

M: One Form A

B: One Form B

D: Standard DC Coil

Coil Type:

Coil Voltage:

05: 5V, 06: 6V, 09: 9V, 12: 12V, 15: 15V

18: 18V, 24: 24V, 48: 48V, 110: 110V

Number of Pole:

1: One Pole

Type of Sealing:

Nil: Open Type

SS: Flow Solder Type

Type:

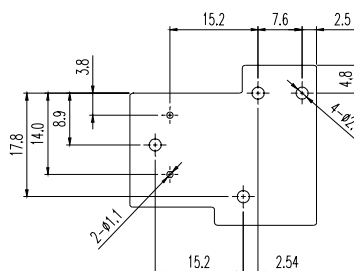
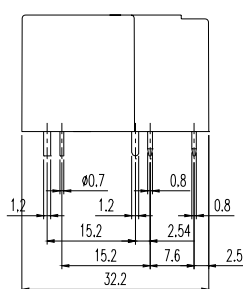
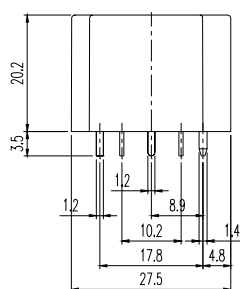
GU

Classification

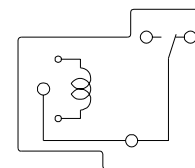
Model	GU		
Contact Form	1C	1A	1B
Open Type	GU-1□□D	GU-1□□DM	GU-1□□DB
Flow Solder Type	GU-SS-1□□D	GU-SS-1□□DM	GU-SS-1□□DB

Dimension

GU-SS/SH

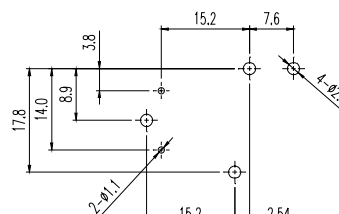
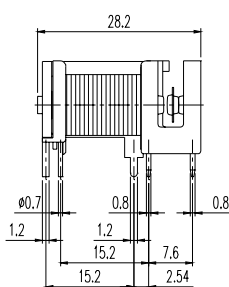
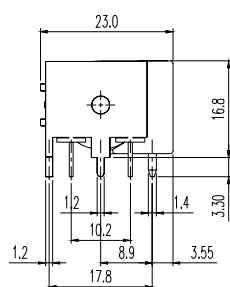


BOTTOM VIEW

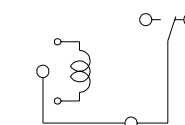


BOTTOM VIEW

GU



BOTTOM VIEW



BOTTOM VIEW