

Main Feature

SF:

1. Flat formed type power relay rating 15A
2. Appropriate for control of resistive load
3. Low power consumption 200mW

SFG :

1. Flat formed type power relay with fasten terminals and PC board terminals.
2. Appropriate for control of resistive load.
3. Low power consumption 200mW

Application

Domestic, Appliance, Office Machine, Air-Conditioner, Controlling Equivalent, etc.



Contact Rating

- Nominal Load (Resistive Load $\cos \varphi = 1$)
Contact Capacity
 - SF 15A at 125VAC.
10A at 277VAC.
16A at 250VAC.
15A at 24VDC.
1/4HP at 125/250VAC.
 - SFG 15A at 125VAC.
10A at 250VAC.
10A at 30VDC.
- Rated Carrying Current 16A.
- Max. Allowable Current 16A.
- Max. Allowable Voltage AC 277V.
- Max. Allowable Power Force
 - SF 4,000VA, 480W.
 - SFG 2,500VA, 300W.
- Min. Switching Load DC 10V, 10mA.
- Contact Material Ag Alloy.
- Contact Form SPST.

Performance (at Initial Value)

- Contact Resistance 100m Ω Max. @1A,6VDC
- Operate Time 20 mSec. Max.
- Release Time 10 mSec. Max.
- Dielectric Strength :
 - Between Coil & Contact 1,500VAC at 50/60 Hz for one minute.
 - Between Contacts 1,000VAC at 50/60 Hz for one minute.

- Surge Resistance 5,000V (between Coil & Contact 1.2x50 μ Sec.)
- Insulation Resistance 1,000 Mega Ω Min. at 500VDC
- Max. On/Off Switching :
 - Electrical 20 Ops. per Minute.
 - Mechanical 300 Ops. per Minute.
- Temperature Range -40~55°C
- Humidity Range 45~85% RH.
- Coil Temperature Rise 35°C Max.
- Vibration :
 - Endurance 10 to 55 Hz dual amplitude width 1.5mm.
 - Error Operation 10 to 55 Hz dual amplitude width 1.5mm.
- Shock :
 - Endurance 1,000 m/S² Min.
 - Error Operation 100 m/S² Min.
- Life Expectancy :
 - Mechanical 10⁷ Operations at No Load condition.
 - Electrical 5x10⁴ Operations at Rated Resistive Load.
- Weight About SF: 8.5 g
..... SFG : 9 g

Safety Standard & Its File Number

- SF : C-UL E141060
TÜV R9956053
- SFG : UL E141060
CSA 215942

Coil Specification (at 20°C)

Coil Sensitivity	Nominal Voltage (VDC)	Nominal Current (mA)	Coil Resistance ($\Omega \pm 10\%$)	Power Consumption (W)	Pull-In Voltage (VDC)	Drop-Out Voltage (VDC)	Maximum Allowable Voltage (VDC)
SF/SFG	5	40	125	Abt. 0.20	70% Maximum	5% Minimum	150%
	6	34	180				
	9	23	405				
	12	17	720				
	18	11	1,620				
	24	0.84	2,880				
	48	0.42	11,520	Abt. 0.56			
	100	5.6	18,000				

Ordering Information

SF - SS - 1 12 D M

Contact Form:

M: One Form A

Coil Type:

D: Standard DC Coil

Coil Voltage: 05: 5V, 06: 6V, 09: 9V, 12: 12V, 18: 18V, 24: 24V, 48: 48V, 100: 100V

Number of Pole:

1: One Pole

Type of Sealing:

SS: Flow Solder Type

SH: Plastic Sealed Type

Type:

SF

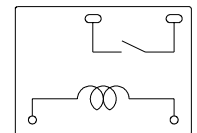
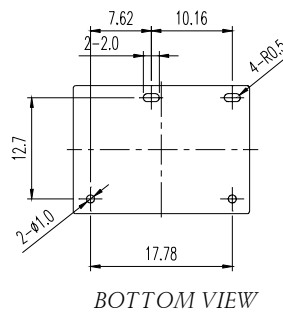
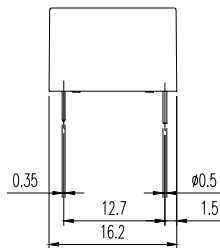
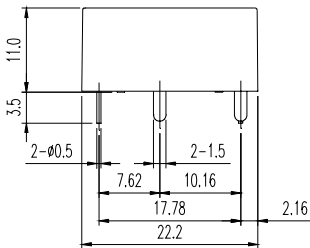
SFG

Classification

Model	SF	SFG
Contact Form	1A	1A
Flow Solder Type	SF-SS-1□□DM	SFG-SS-1□□DM
Plastic Sealed Type	SF-SH-1□□DM	SFG-SH-1□□DM

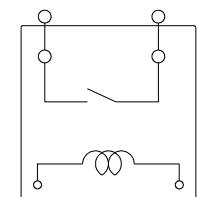
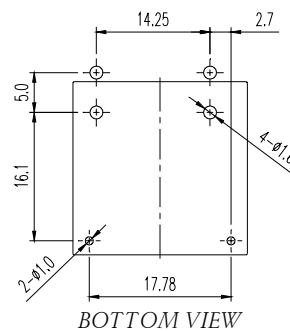
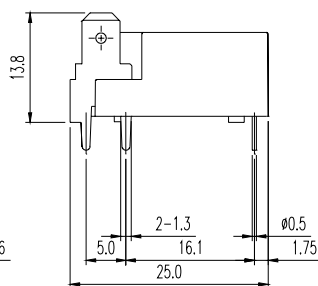
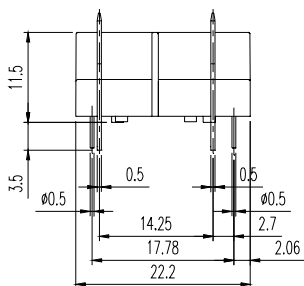
Dimension

SF-SS/SH



BOTTOM VIEW

SFG-SS



BOTTOM VIEW