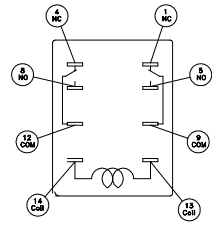
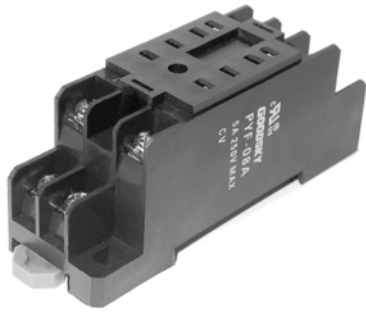


# Socket illustration

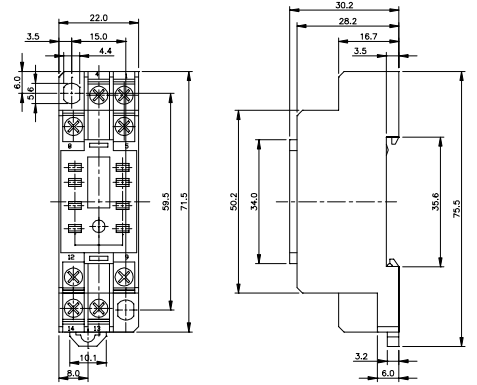
## PYF-08A



Terminal illustration



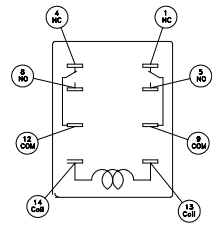
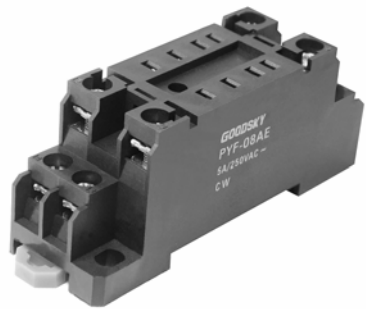
Equipment



Appearance illustration

## PYF-08AE

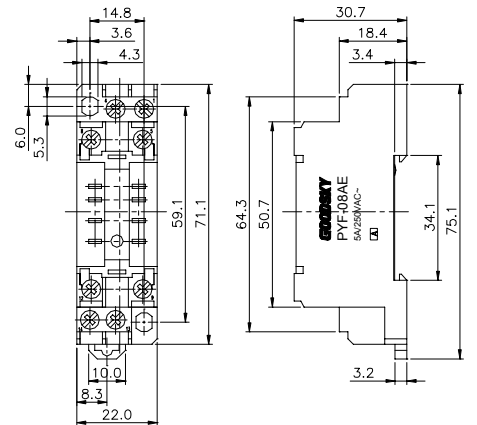
**NEW**



Terminal illustration

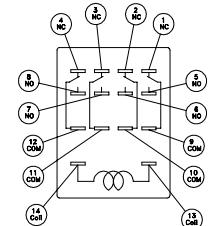


Equipment



Appearance illustration

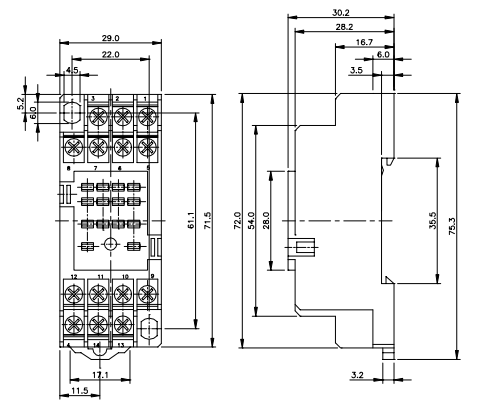
## PYF-14A



Terminal illustration



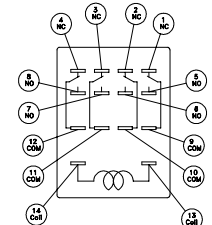
Equipment



Appearance illustration

## PYF-14AE

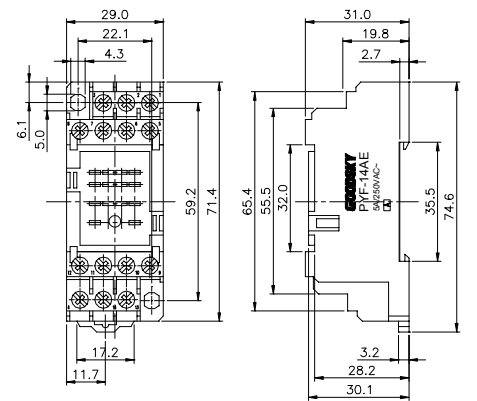
**NEW**



Terminal illustration



Equipment

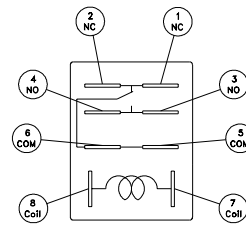
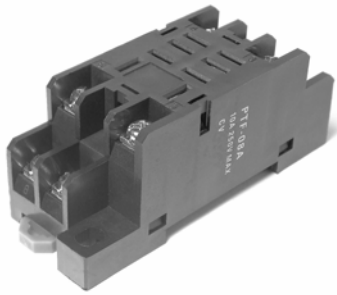


Appearance illustration

Socket illustration

PTF-08A

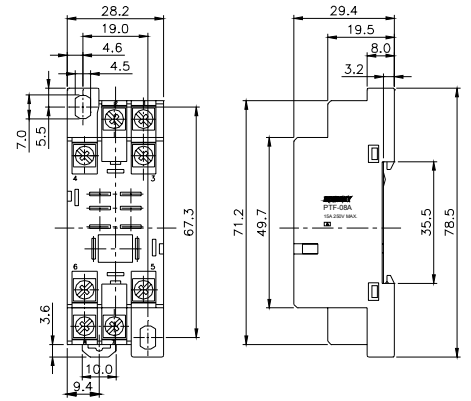
**NEW**



Terminal illustration



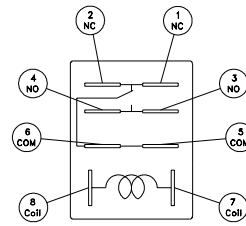
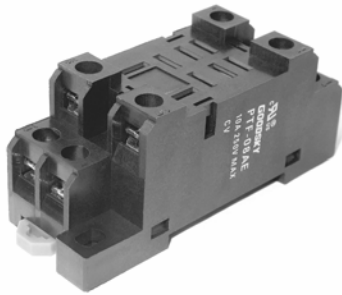
Equipment



Appearance illustration

PTF-08AE

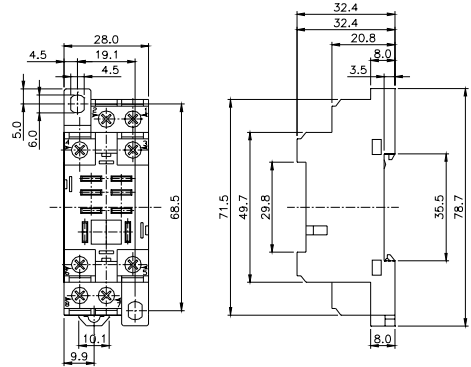
**NEW**



Terminal illustration



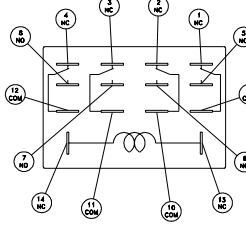
Equipment



Appearance illustration



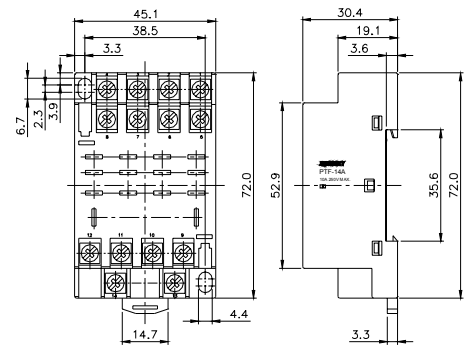
PTF-14A



Terminal illustration



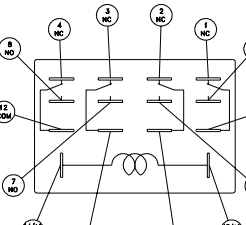
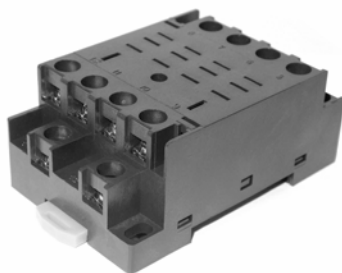
Equipment



Appearance illustration

PTF-14AE

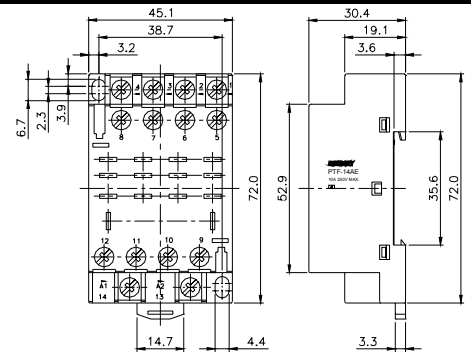
**NEW**



Terminal illustration



Equipment

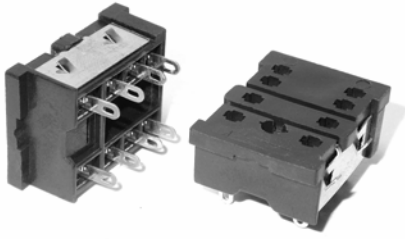


Appearance illustration

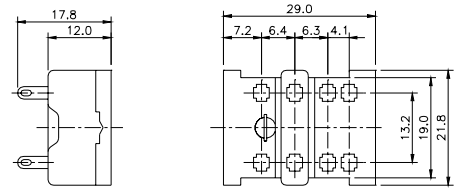
Socket illustration

PY-08

**NEW**

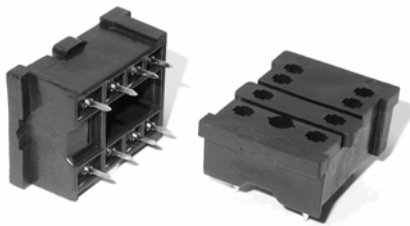


Equipment

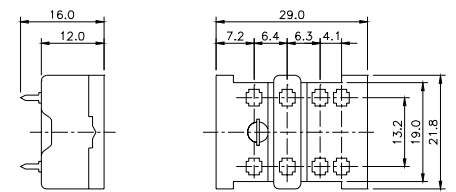


Appearance illustration

PY-08-0



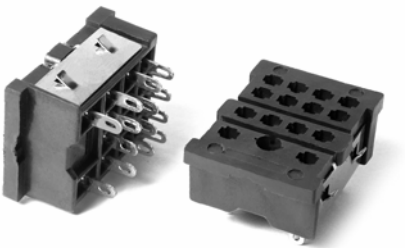
Equipment



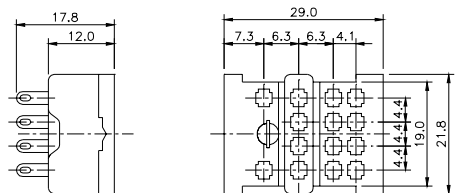
Appearance illustration

PY-14

**NEW**

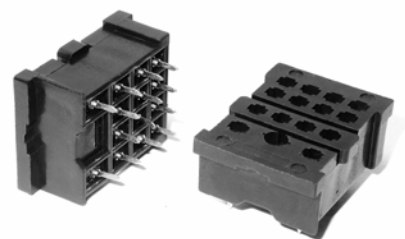


Equipment

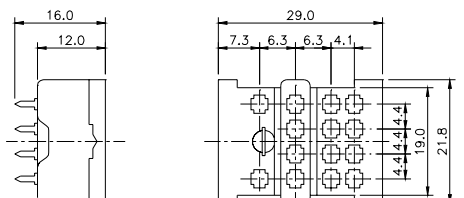


Appearance illustration

PY-14-0



Equipment

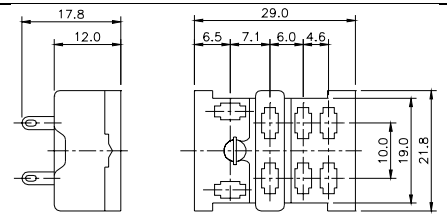
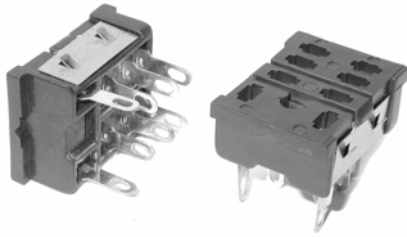


Appearance illustration

Socket illustration

PT-08

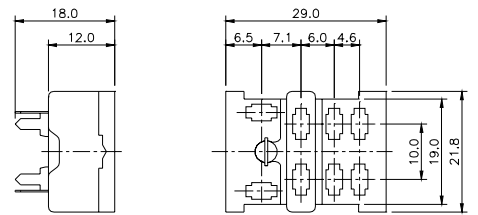
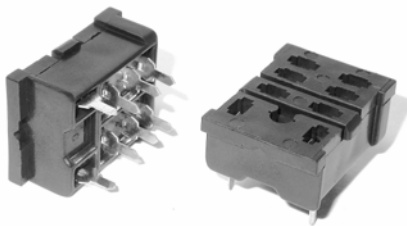
**NEW**



Equipment

Appearance illustration

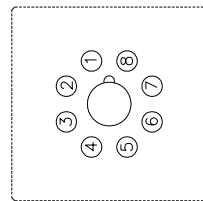
PT-08-0



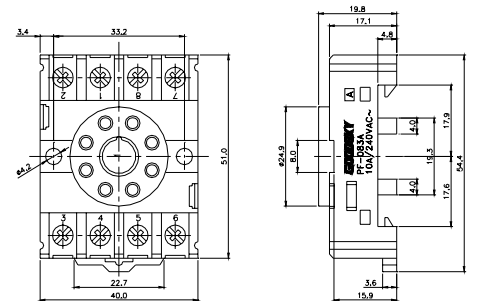
Equipment

Appearance illustration

PF-083A



Terminal illustration

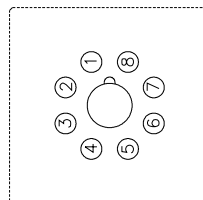


Equipment

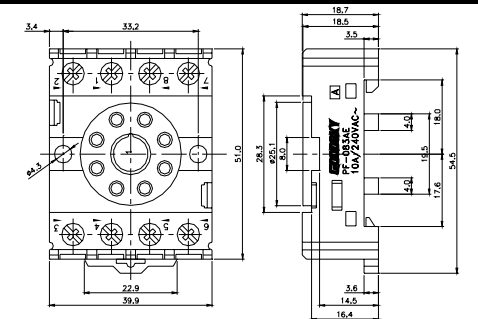
Appearance illustration

PF-083AE

**NEW**



Terminal illustration



Equipment

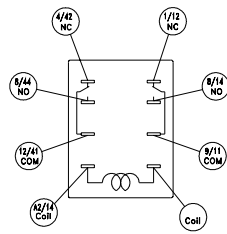
Appearance illustration



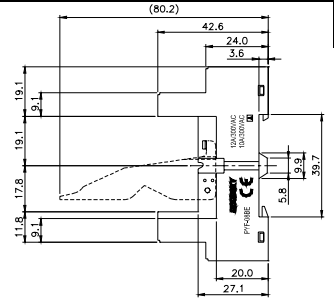
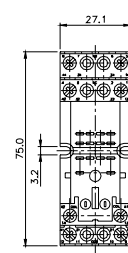
# Socket illustration

**PYF-08BE**

**NEW**



Terminal illustration

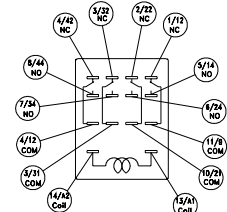


Equipment

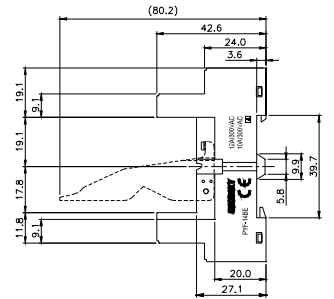
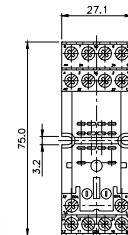
Appearance illustration

**PYF-14BE**

**NEW**



Terminal illustration

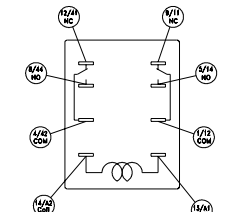


Equipment

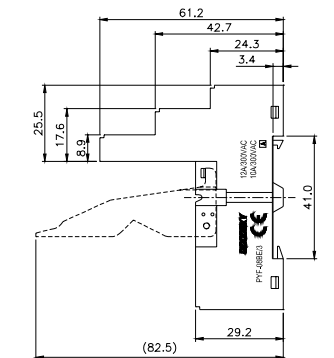
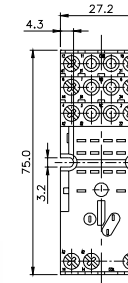
Appearance illustration

**PYF-08BE/3**

**NEW**



Terminal illustration

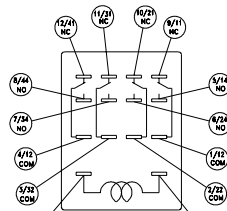


Equipment

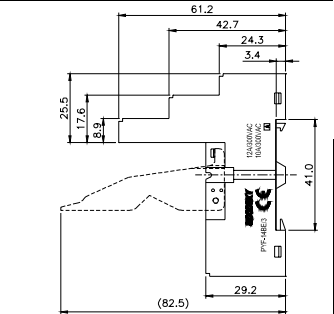
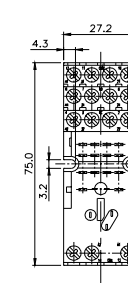
Appearance illustration

**PYF-14BE/3**

**NEW**



Terminal illustration



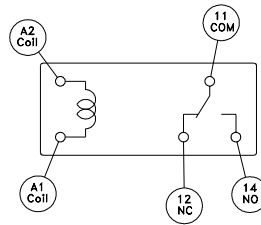
Equipment

Appearance illustration

# Socket illustration

**PI-35BE**

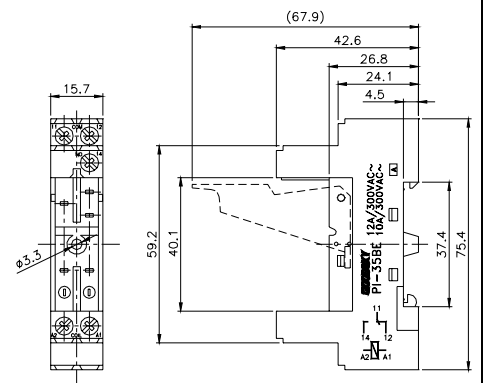
**NEW**



Terminal illustration



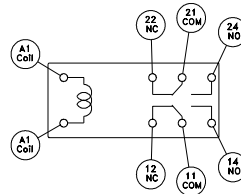
Equipment



Appearance illustration

**PI-50BE**

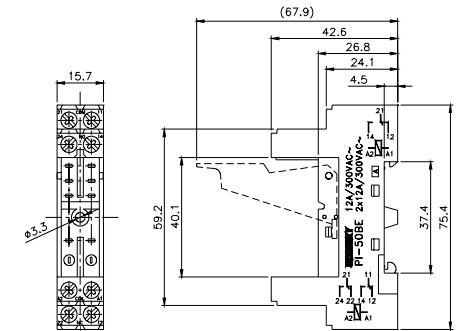
**NEW**



Terminal illustration



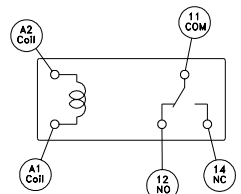
Equipment



Appearance illustration

**PI-35BE/3**

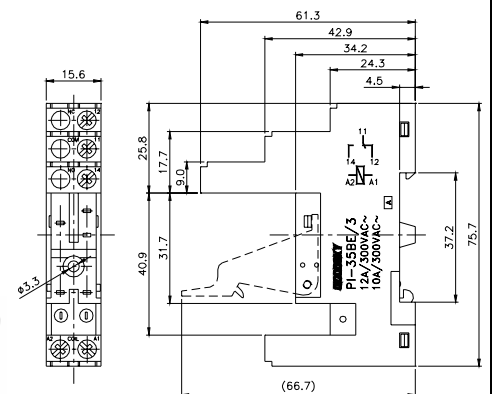
**NEW**



Terminal illustration



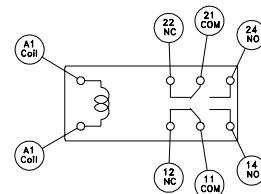
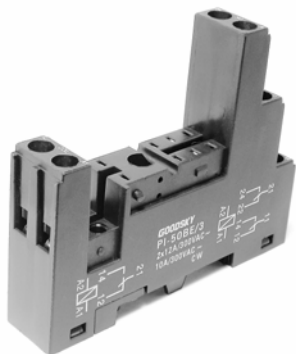
Equipment



Appearance illustration

**PI-50BE/3**

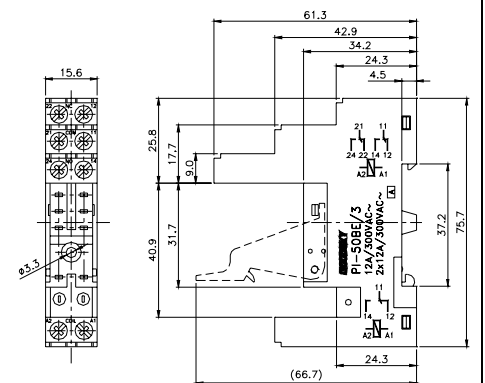
**NEW**



Terminal illustration



Equipment

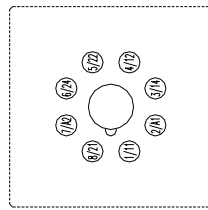


Appearance illustration

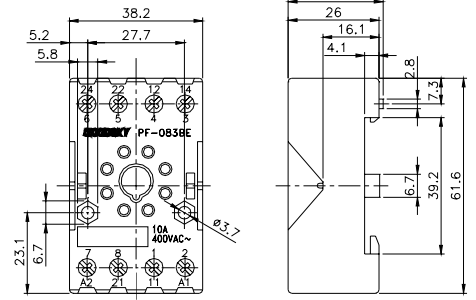
Socket illustration

PF-083BE

NEW



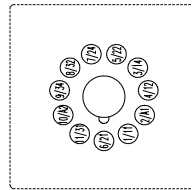
Terminal illustration



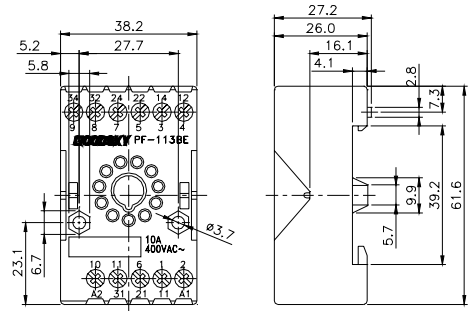
Appearance illustration

PF-113BE

NEW



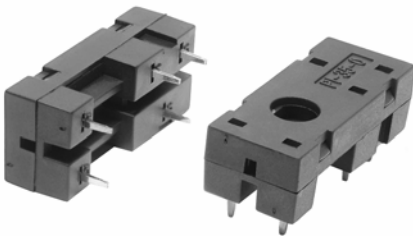
Terminal illustration



Appearance illustration

PI-35-0

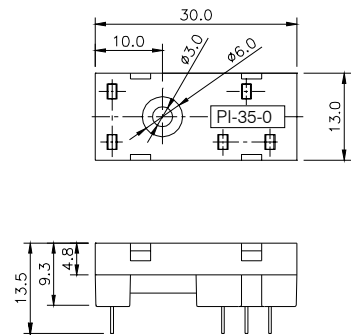
NEW



(Metal)



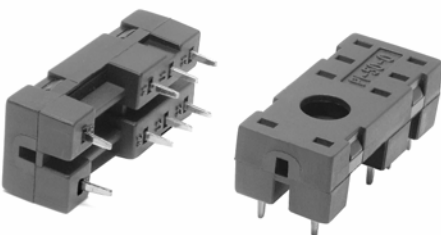
(Plastic)  
Equipment



Appearance illustration

PI-50-0

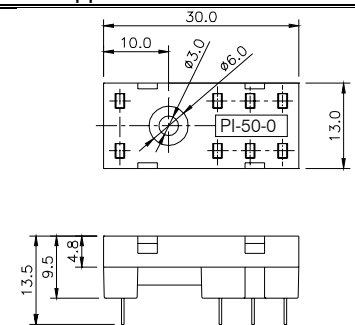
NEW



(Metal)



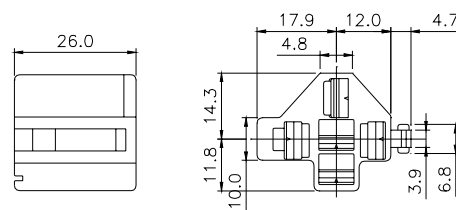
(Plastic)  
Equipment



Appearance illustration

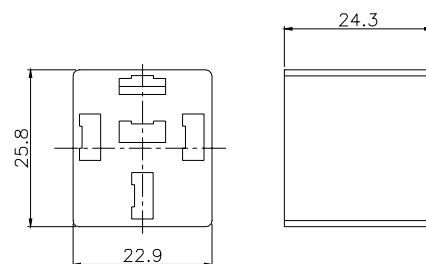
## Socket illustration

### UC3003



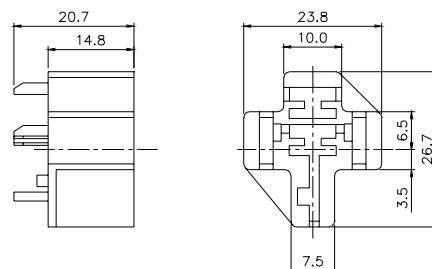
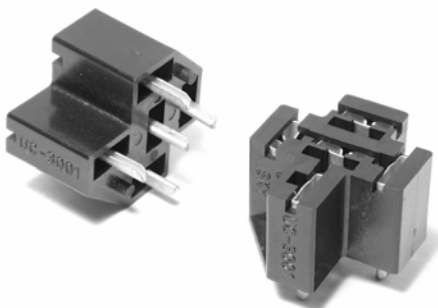
Appearance illustration

### CS3770



Appearance illustration

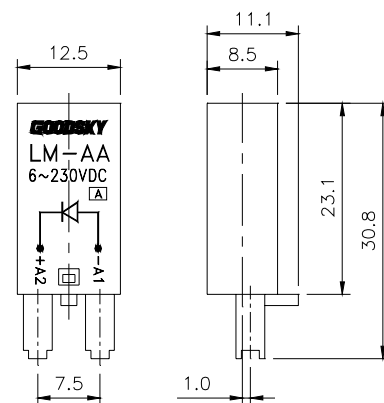
### UC3001



Appearance illustration

### LED Module

**NEW**



Appearance illustration

## LED Module Wiring Diagrams

AC	AB	BC	BD	BE	CF	CG
CH	DI	DJ	DK	EL	EM	EN
FO	FP	FQ	FR	GR	GS	GT
HU						

### ■ Retaining Clip for Sockets Ordering Information

<b>B</b>	<b>P</b>	<b>-16</b>	<b>-P</b>	<b>S</b>		
					<b>Retainer Type:</b>	Nil: Retainer (for DIN-Rail Socket) S: Simple Type
					<b>Material:</b>	P: Plastic M: Metal
					<b>Suit Relay High:</b>	-16: 15.0~16.5mm -20: 20.0~20.5mm -25: 25.0~25.5mm -29: 29mm (for PYF DIN-Rail Socket Only) -36: 34.6~35.7mm (for PYF DIN-Rail Socket only)
					<b>Socket Type:</b>	P: PCB Socket S: DIN-Rail Socket
					<b>Item:</b>	B: Retaining Clip

### ■ LED Module Ordering Information

<b>LM</b>	<b>-AA</b>		
		<b>Area Code:</b>	-AC, -AB -BC, -BD, -BE -CF, -CG, -CH -DI, -DJ, -DK -EL, -EM, -EN -FO, -FP, -FQ, FR -GR, -GS, -GT -HU
		<b>Produce Name:</b>	LM: LED Module